



Sons of Confederate Veterans

Georgia Division, Old Capitol Camp, No. 688, P.O. Box 167, Milledgeville, GA 31059-0167

The Camp Follower

Volume 8, Issue 9

September 3, 2010

Monthly Meeting

What: Dinner and Program

When: 7:00 PM – September 9, 2010

Where: The Milledgeville Country Club

Commander's Comments

It has been a wonderful SCV month. New members, supplemental, and exciting plans for the future are happening in our Camp. Please read about Old Capitol Camp #688 in the recent issue of The Georgia Confederate. Our Camp stands out among other camps in the 4th Brigade.

I look forward to seeing you on Thursday at our monthly meeting. Bring a friend to share our Southern hospitality.

Yours in the Cause,
Craig Coleman, Camp Commander

UPCOMING EVENTS

Flag pole dedication on September 25, 2010, 4:00 PM. Directions Exit 71 off of I-75 north or Tifton. This will feature a 30 ft. by 50 ft. battle flag flying from a 120 ft. flag pole. See Page 1 of The Georgia Confederate for more information.

On October 9, 2010, 2:00 PM rededication ceremony for the Confederate Powder Works chimney at 1717 Goodrich Street, Augusta, GA.

MEMBERSHIP RENEWALS

Members are reminded that the annual dues are due. Please respond to our Adj. Konreid Etheredge before November 1, 2010, after that date there is a \$5.00 late fee.

General George Pierce Doles

Camp #688 is planning a Memorial Service to honor General George P. Doles and his service to our Southern cause. His was the ultimate service which resulted in his death at Cold Harbor, Virginia on June 2, 1864.

This memorial is being planned for June, 2011. It will be done with dignity and solemn respect with the advice and consultation of his descendents which include Mr. Larry Smith, an active member of our camp.

General Doles was the brave and gallant leader of Doles Brigade which consisted of the 4th, 12th, 21st, and 44th Georgia Regiments of Infantry.



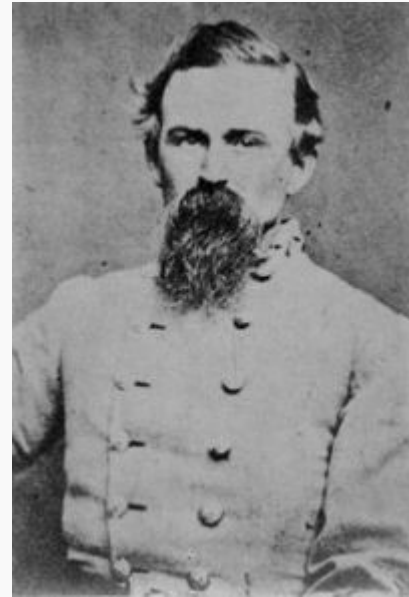
Above Compatriot Davis, acting as chaplain, inducts Compatriot Charles Sailors into the camp. In the background Commander Coleman and Adj. Etheredge look on. Congratulations to Compatriot Sailors.



Above "Miss Catherine" is surrounded by L-R Compatriot Roy Mixon, Adj. Etheredge, Commander Coleman, and Compatriot Dan Dixon. Mrs. Catherine gave us a talk on Reflections and Reminiscences of her family members in Wilkinson County Georgia during the war. Miss Catherine, as well as her remarks, were well received by the members and their wives in attendance.

George Pierce Doles

1830 – 1864



George P. Doles

Place of birth	Milledgeville, Georgia
Place of death	near Bethesda Church, Virginia
Place of burial	Memory Hill Cemetery Milledgeville, Georgia
Allegiance	Confederate States of America
Service branch	Confederate States Army
Years of service	1861-1864
Rank	Brigadier General (CSA)
Battles/wars	War Between the States